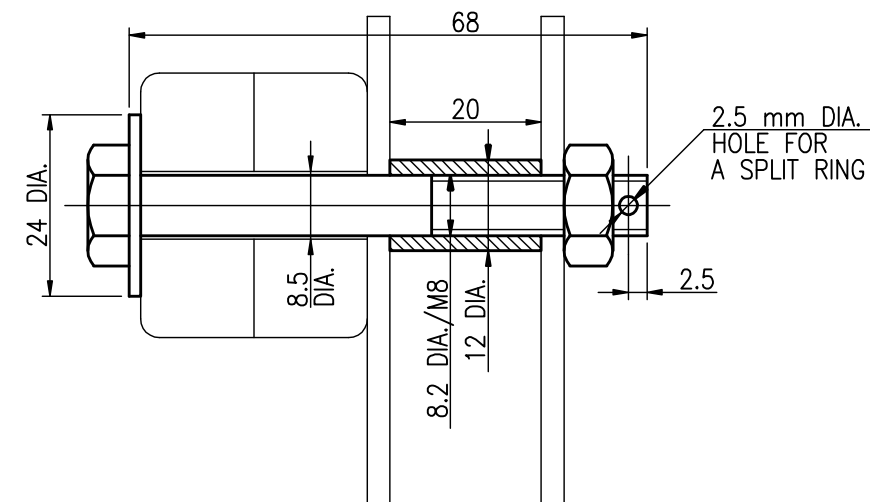
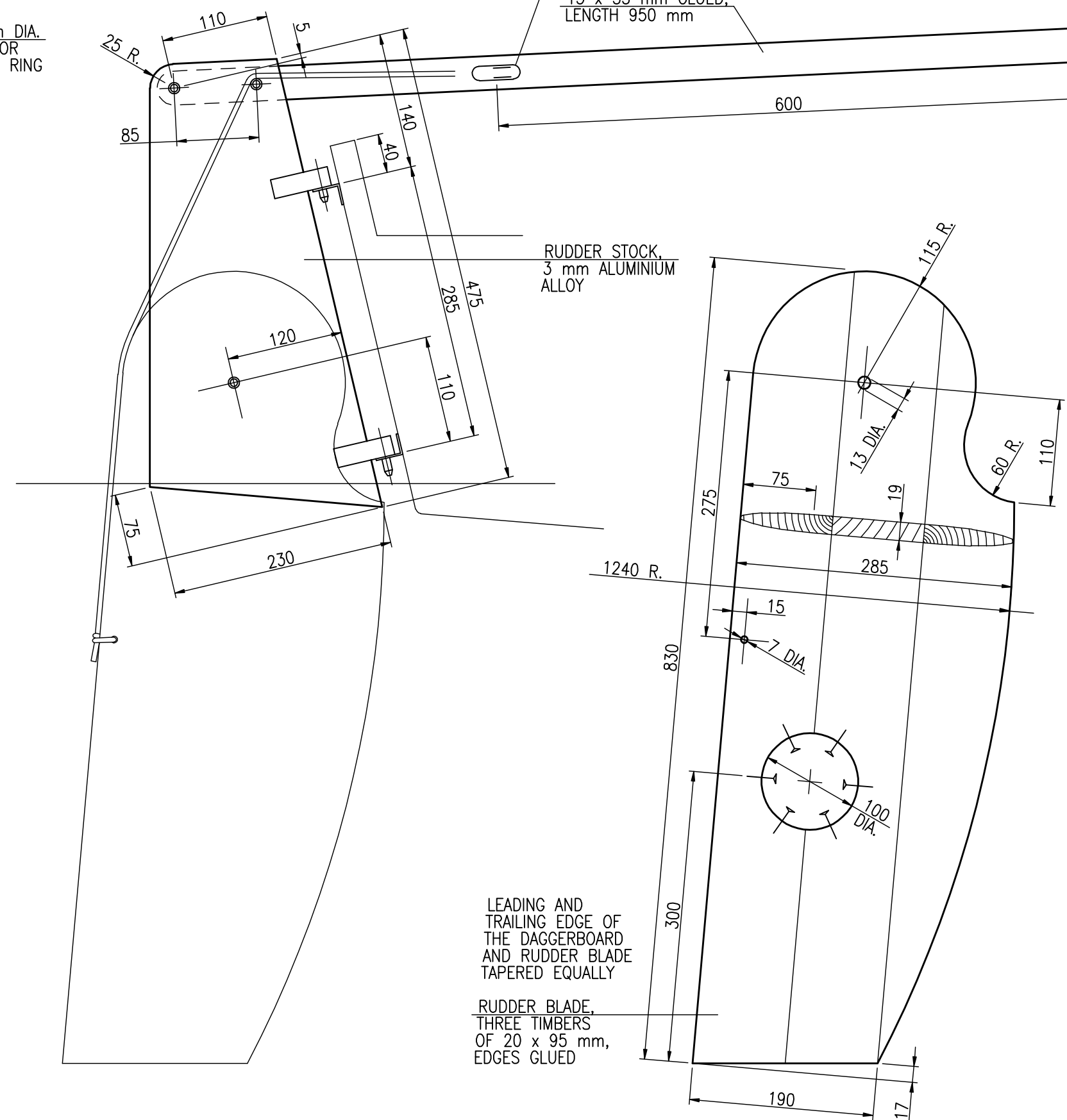


TILLER AND STOCK CONNECTION STAINLESS STEEL



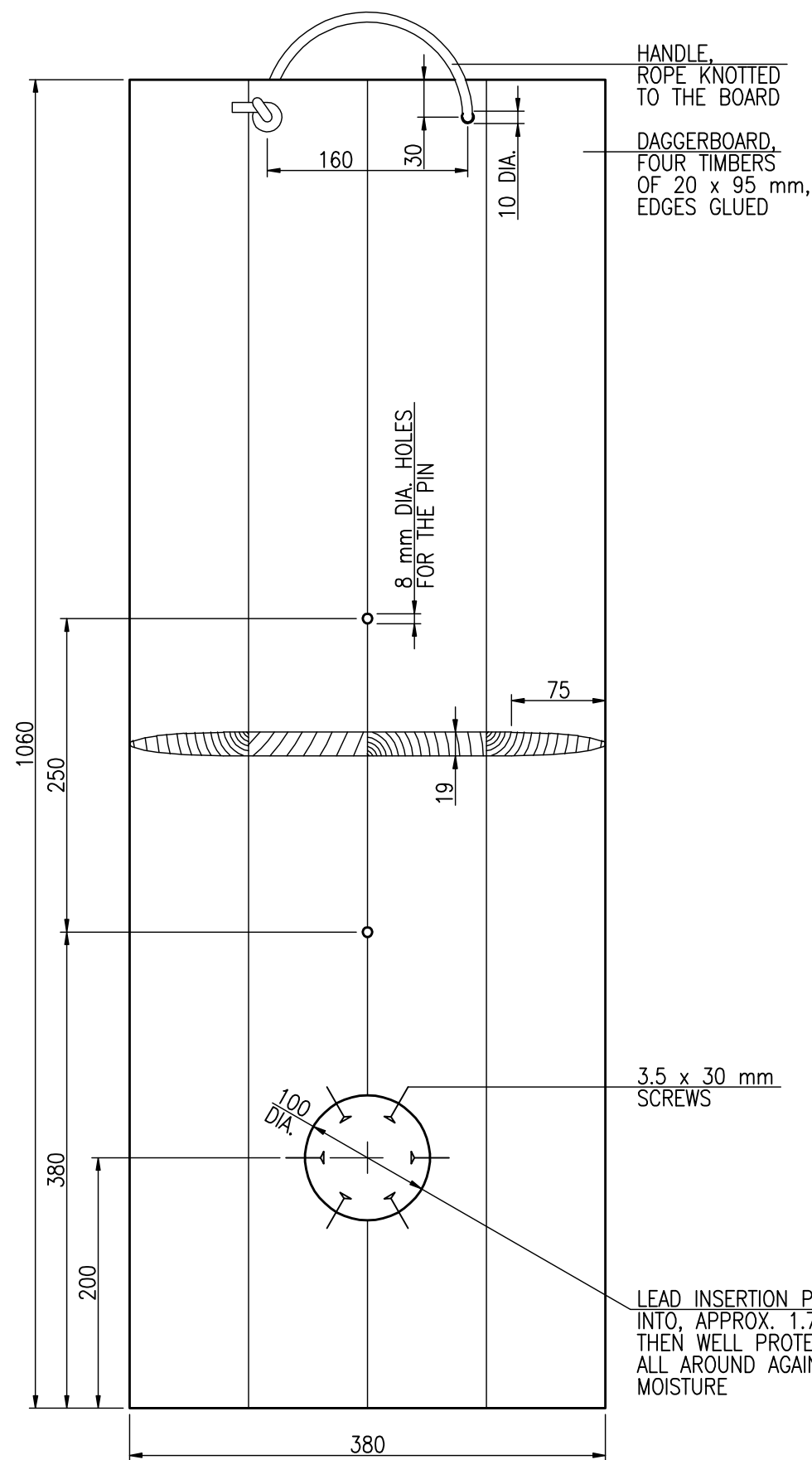
SMALL SIZE V-CLEAT FOR
THE RUDDER BLADE UPHAUL

TILLER, HARDWOOD,
TWO LAYERS OF
15 x 35 mm GLUED,
LENGTH 950 mm



LEADING AND
TRAILING EDGE OF
THE DAGGERBOARD
AND RUDDER BLADE
TAPERED EQUALLY

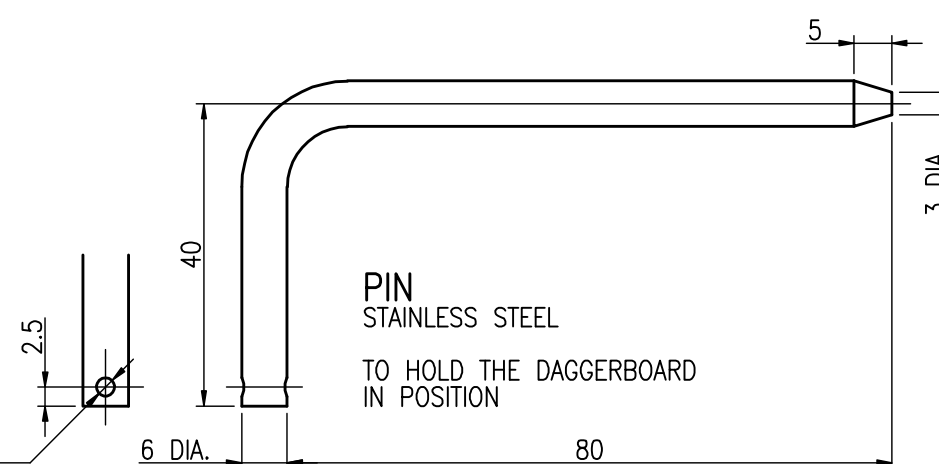
RUDDER BLADE,
THREE TIMBERS
OF 20 x 95 mm,
EDGES GLUED



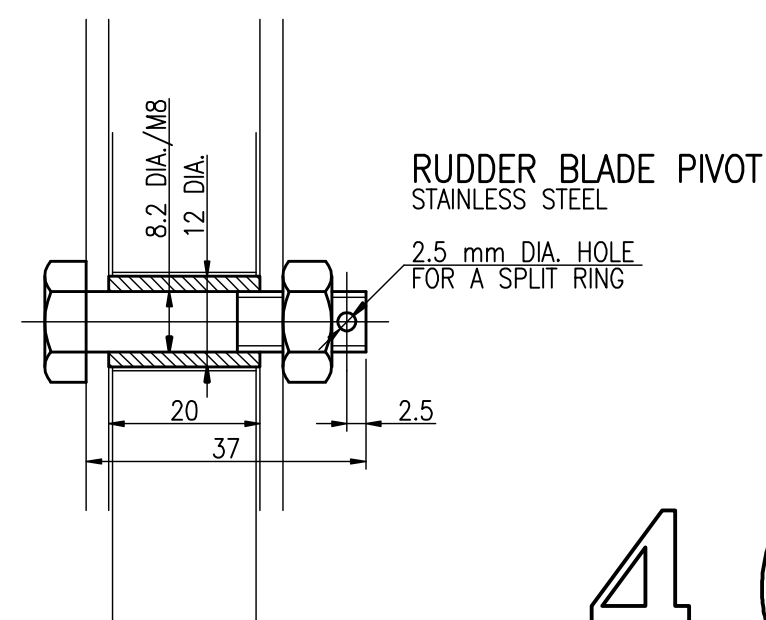
HANDLE
ROPE KNOTTED
TO THE BOARD

DAGGERBOARD,
FOUR TIMBERS
OF 20 x 95 mm,
EDGES GLUED

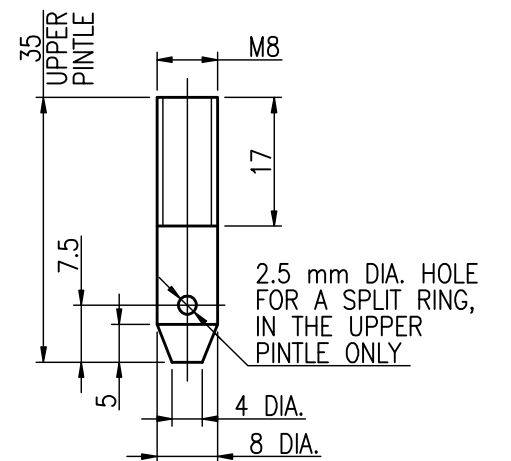
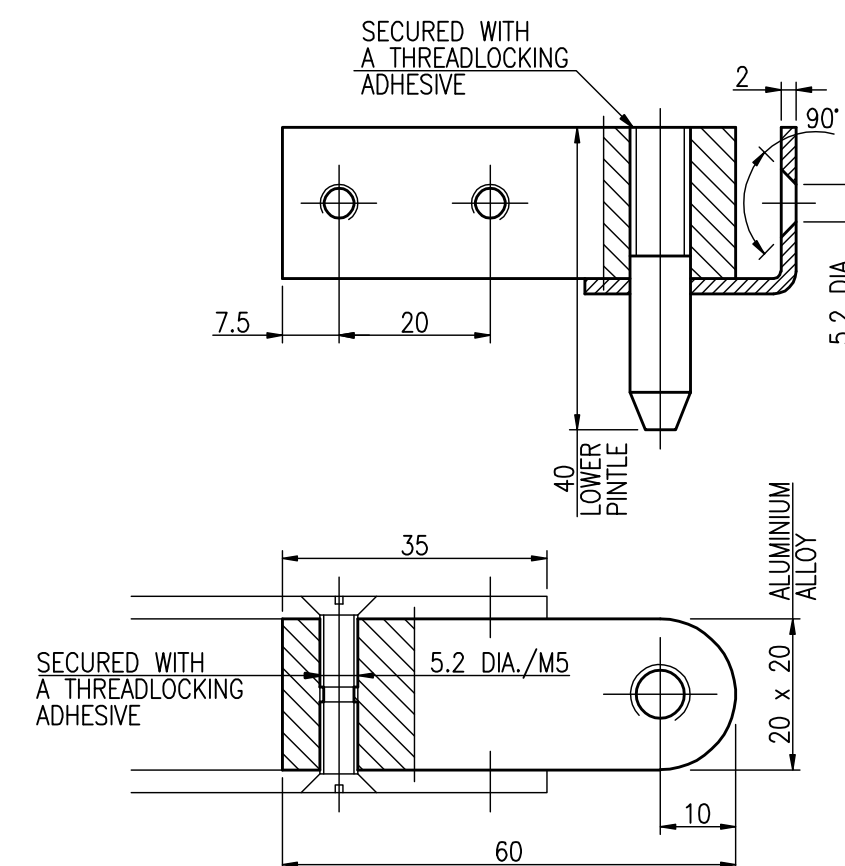
2.5 mm DIA. HOLE
FOR A SPLIT RING AND
RETAINING LANIARD



PIN
STAINLESS STEEL
TO HOLD THE DAGGERBOARD
IN POSITION

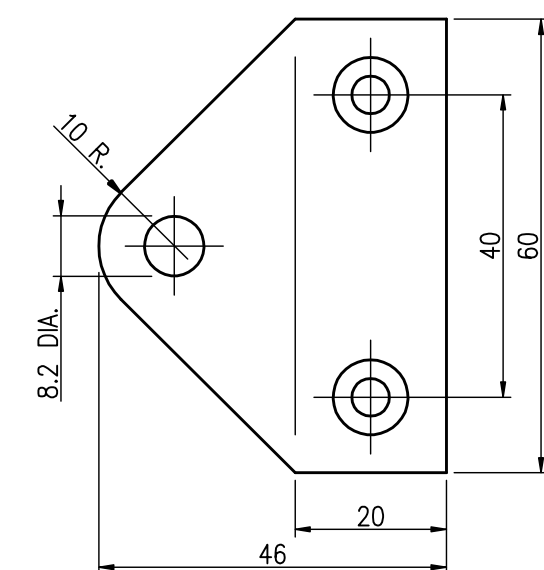


RUDDER BLADE PIVOT
STAINLESS STEEL



PINTLE AND GUDGEON
STAINLESS STEEL

GUDGEONS FASTENED
TO THE TRANSOM WITH
M5 STAINLESS STEEL BOLTS



4.0m

DAGGERBOARD AND RUDDER
SHEET 40.5/5, SIZE A2
SCALE 1:1, 1:5

RADOSŁAW WERSZKO
AUGUST 2006